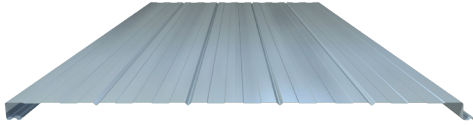


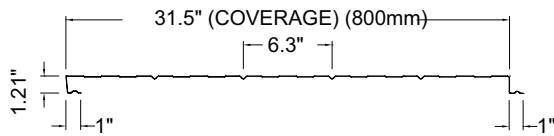
LinerSeal provides an attractive low profile look to the interior of any building. It is the basis of a wall or roof standoff insulation system. The panel can be ordered with optional factory applied caulking for use as part of a vapour barrier system.

### MATERIAL



Available in a variety of gauges and colours, the LinerSeal panel creates a clean and attractive building interior while performing as part of an air and vapour barrier system.

### PROFILE



### COMPLETE SYSTEM

Steelway supplies all of the components for a complete wall or roof system including liner, exterior panels, base channel, notched zee standoff, sealants, and fasteners. Custom components for specialty applications are available upon request.

### SECTION PROPERTIES

### IMPERIAL/METRIC

Thickness		Yield Strength (ksi/MPa)	Recommended Spans		
Gauge	Base (in/mm)		UP TO 7' 6" / 2.2m	UP TO 8' 6" / 2.5m	UP TO 10' / 3m
26	0.018 / 0.457	50 / 345	✓	-	-
24	0.024 / 0.610	50 / 345	✓	✓	-
22	0.030 / 0.762	50 / 345	✓	✓	✓
20	0.036 / 0.914	50 / 345	✓	✓	✓
18	0.048 / 1.219	33 / 230	✓	✓	✓

1. The above specifications are based on a  $q1:50 = 0.48$  kPa (10psf), category 2 internal pressures/suctions
2. LinerSeal is primarily used as part of a roof and wall system and does not contribute to structural performance.
3. External loads and deflection requirements must be supported by the outer sheet of the system.
4. Due to the thickness and coverage of the material, oil canning may be present and is not a valid reason for rejection of this product.

# LINERSEAL

ROOF & WALL LINER

### COMPONENTS OF A THERMASEAL ASSEMBLY

#### 1. LINERSEAL PANEL

This panel is available in a base steel thickness between 18 and 26 gauge. Please refer to the Steelway Colour Chart for standard colours and gauges.

#### 2. THERMAL NOTCHED ZEE STANDOFF

Designed to reduce thermal bridging, the Thermal Notched Zee standoff is unique to Steelway and is available in various widths to accommodate the desired thickness of insulation. A non-thermal version is also available when required.

#### 3. INSULATION

Type and thickness as specified.

#### 4. EXTERIOR CLADDING

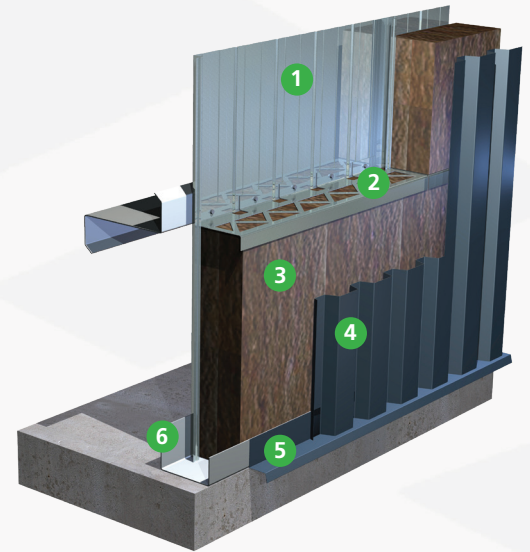
Steelway offers a wide selection of profiles, gauges and colours.

#### 5. TRIMS & FLASHINGS

Steelway offers a complete line of trims and flashings to complete the standoff system.

#### 6. BASE CHANNEL

Made of light gauge galvanized material to suit standoff depth.



Contact Steelway Building Systems to learn more about LinerSeal and get the Strength of Steelway on your next project.

**STEELWAY**  
BUILDING SYSTEMS